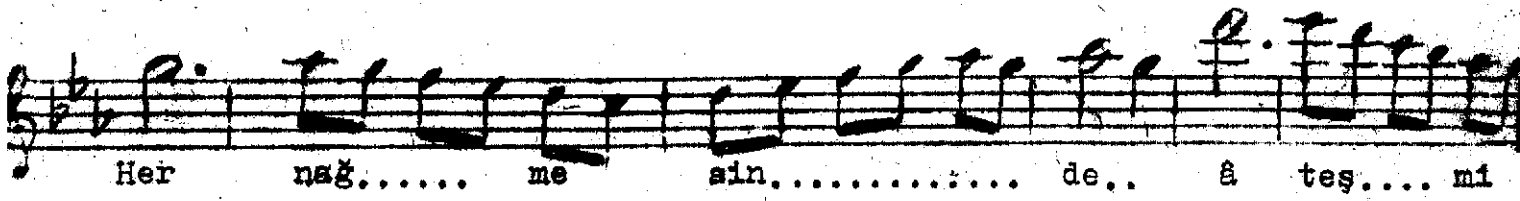
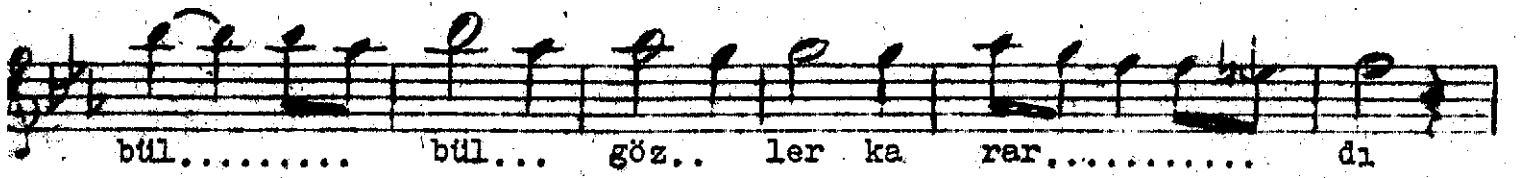
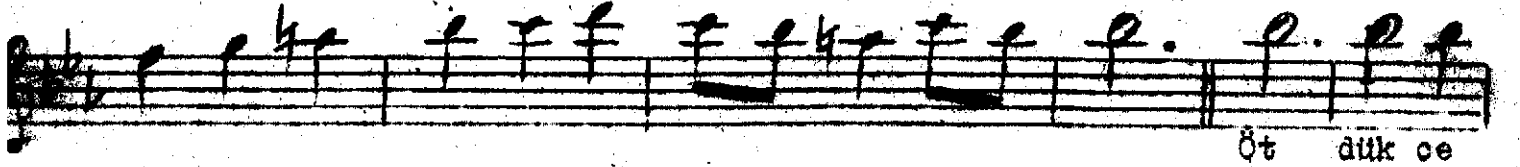
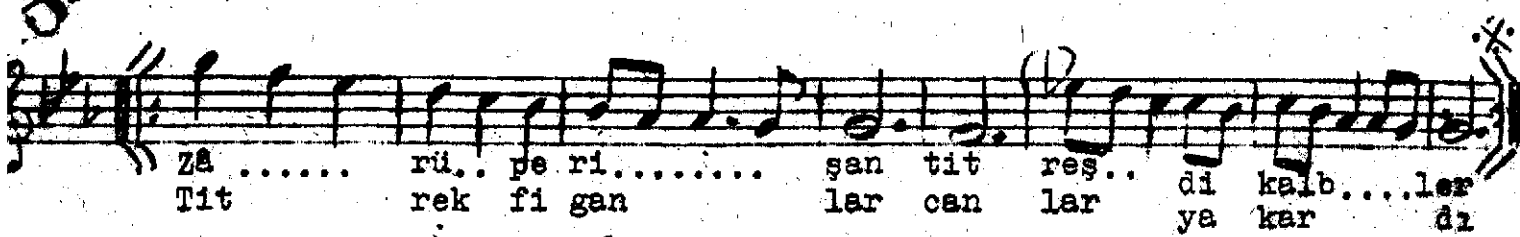
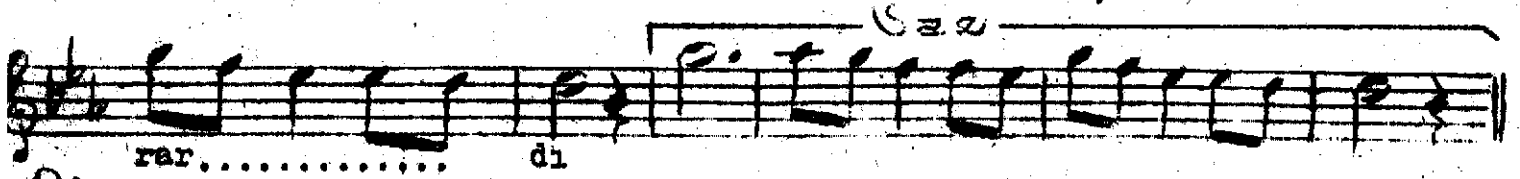
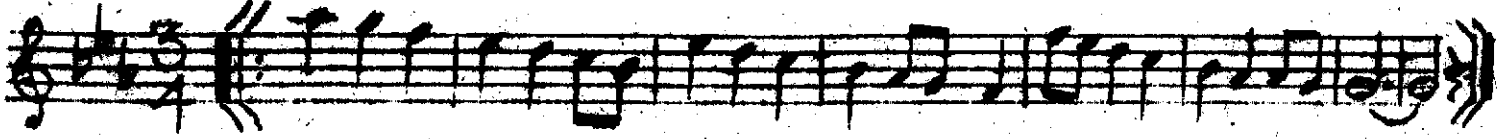


## KÜRDİLİHİCAZKÂR ŞARKI

Semâî

Lem'i Atlı

(Aranağmesi)



Nazlandı bulbul güller sarardı,  
Zârû perişân titreşti kalbler  
Öttükçe bulbul gözler karardı  
Her nağmesinde âteş mi vardı

(Son nakarat) Titrek figanlar canlar yakardı.